



2345gv Gibbins Road, Selly Oak, Birmingham, B29 7RL

£1,313 Per Calendar Month



2026/2027 Academic Year | Delightful 3-Bedroom Student Accommodation
Suitable for Students and Professionals

This charming 3-bedroom property on Milner Road, Selly Oak offers comfortable living in a convenient location, ideal for students or working professionals.

Property Features:

- Three spacious double bedrooms with new beds and high-quality orthopedic mattresses
- Well-equipped kitchen with appliances and laminate flooring
- Comfortable living room with a separate lounge/dining area
- Gas central heating throughout
- Smoke alarm system and security alarm for added safety

Location Highlights:

- Approximately 20–30 minutes to the University of Birmingham
- Just a 4-minute walk to local shops and supermarkets
- Within walking distance of Selly Oak and Bournville train stations, as well as Bristol Road

Additional Information:

- Low deposit: £400 per person (based on a group of three tenants)
- Optional unlimited bills package available for £134.82 pppw
- Well-presented and well-located, this property offers a comfortable and practical home for the 2026/2027 academic year.

Viewings are by appointment only. Contact MKP Management today to arrange yours.

Viewing

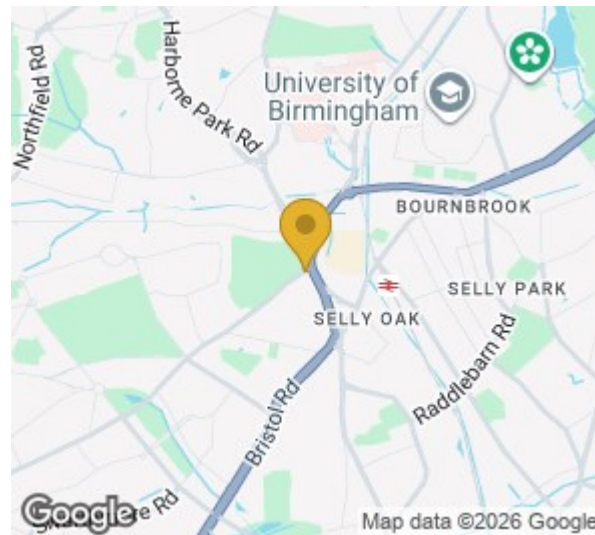
Please contact our MKP MANAGEMENT Office on 0121 472 5897
if you wish to arrange a viewing appointment for this property or require further information.



Milner Road Ground Floor



Milner Road First Floor



Energy Efficiency Rating

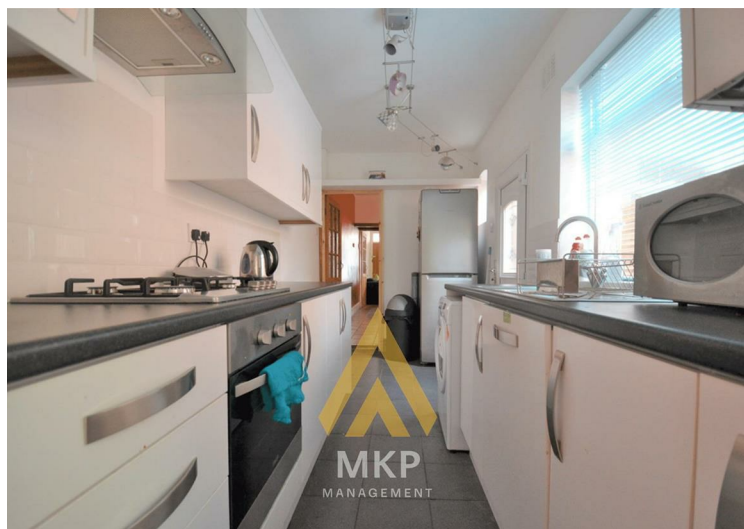
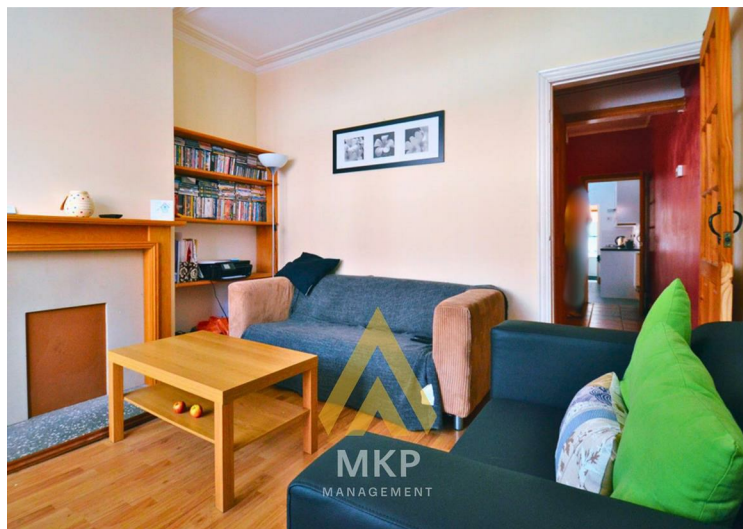
Rating	Current	Potential
Very energy efficient - lower running costs		
(92 plus) A		
(81-91) B		
(69-80) C		
(55-68) D		
(39-54) E		
(21-38) F		
(1-20) G		
Not energy efficient - higher running costs		
Current Score: 82		Potential Score: 61

EU Directive 2002/91/EC

Environmental Impact (CO₂) Rating

Rating	Current	Potential
Very environmentally friendly - lower CO ₂ emissions		
(92 plus) A		
(81-91) B		
(69-80) C		
(55-68) D		
(39-54) E		
(21-38) F		
(1-20) G		
Not environmentally friendly - higher CO ₂ emissions		
Current Score: 83		Potential Score: 59

EU Directive 2002/91/EC



These particulars, whilst believed to be accurate are set out as a general outline only for guidance and do not constitute any part of an offer or contract. Intending purchasers should not rely on them as statements of representation of fact, but must satisfy themselves by inspection or otherwise as to their accuracy. No person in this firm's employment has the authority to make or give any representation or warranty in respect of the property.